



A Complete Collection of LANDSCAPE STYLES

Your guide to materials, décor, plant palettes, color palettes, and fabrics for the most popular garden design themes



A Complete Collection of LANDSCAPE STYLES



Table of Contents:

2 Mediterranean Design Sheets

- Spanish
- Tuscan
- French
- Southwest

7 Traditional Design Sheets

- Colonial
- Saltbox
- Townhouse
- English
- Craftsman

13 Tropical Design Sheets

- South Pacific
- Asian
- Coastal

17 Country Design Sheets

- Farmhouse
- Victorian
- Ranch
- Rustic

22 Modern Design Sheets

- Art Deco
- Modern
- Mid-Century

A Collection of

MEDITERRANEAN LANDSCAPE STYLES

Spanish. Tuscan. French. Southwest.



MEDITERRANEAN: SPANISH LANDSCAPE DESIGN



Brilliant Blue



Baked Terra Cotta



Classic Brown



Oxford White

The only thing missing on the sunset-colored pavers of a Spanish-styled abode is the clip-clop of a famous black horse and its enduringly handsome masked rider. Hail to the cavaliers that harbor amongst the bougainvillea and tiered fountains of the hacienda.

DECOR



Tiered Spanish Fountains



Urns



Moorish Lanterns



Carved Cantera Forms

MATERIALS



Plaster



Slump Block



Saltillo Tiles



Cantera Stone

PLANT PALETTE



Mediterranean Fan Palm



Pomegranate



Citrus



Agave



Bougainvillea



Cactus

FABRICS



Kamal Chestnut



Pacific Blue

MEDITERRANEAN: TUSCAN LANDSCAPE DESIGN



Olive Moss



Tangerine Mist



Sunset Boulevard



Pink Peach

Nothing could be sweeter than a wall fountain that trickled wine, splashing droplets of fermented grapes into glass goblets. Imagine yourself under the Tuscan sun, among the vines and columns of another era, enjoying the sweet rewards of your villa.

DECOR



Hedges



Ionic Columns



Wall Fountains



Armillary

MATERIALS



Plaster



Travertine



Pebble Mosaic



Ironwork Hinges

PLANT P ALETTE



Fig



Italian Cypress



Rosemary



Acanthus



Boxwood



Olive

FABRICS



Camille Laurel



Brass/Black Cherry Classic

MEDITERRANEAN: FRENCH LANDSCAPE DESIGN



Nimbus Gray



French Lilac



Ebony King



Stem Green

Hemingway once said—"If you are lucky enough to have lived in Paris as a young man, then wherever you go for the rest of your life, it stays with you, for Paris is a moveable feast." Much like the gardens of Versailles, French-inspired gardens are a feast for the eyes with topiaries, lavender, and cypress as the table settings. that marry the interior with the exterior. You get the picture.

DECOR



Concrete Balustrade



Topiary Shrubs



Cast Iron Seating



Concrete Fountain

MATERIALS



Pea Gravel



Porcelain Tiles



Marble



Decomposed Granite

PLANT PALETTE



Allium



Boxwood



French Lavender



Pear



Thrift

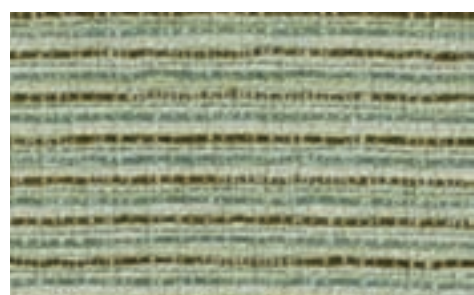


Rockrose

FABRICS



Fiery Blast Twine



Line Pool

MEDITERRANEAN: SOUTHWEST LANDSCAPE DESIGN



Minstrel Heart



Mother Earth



Navajo Red



Warm Earth

There are certain historical feuds we'll never forget, such as the Hatfields and McCoys, or Al Capone and Bugs Moran. The Southwest style is no different. With beehive fireplaces, animal skin rugs, branding irons and spurs, it's hard to tell if you like the cowboys or the Indians.

DECOR



Fountains



Native American Fabrics



Olla Pottery



Native American Art

MATERIALS



Red Clay Pavers



Arizona Flagstone



Stacked Stone



Plaster

PLANT PALETTE



Yucca



Agave



Sage



Palo verde



Desert Spoon



Succulents

FABRICS



Tan



Westfield Salsa

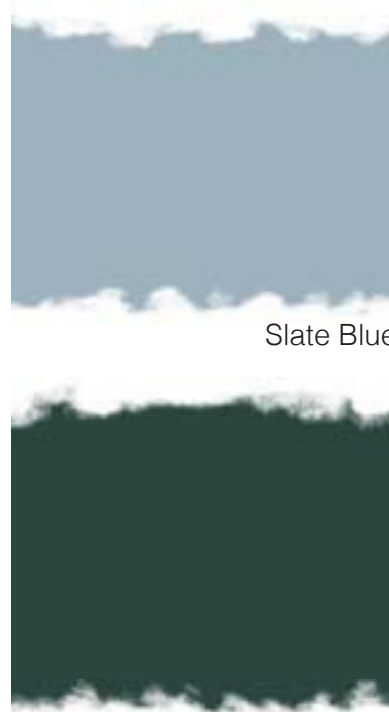
A Collection of

TRADITIONAL LANDSCAPE STYLES

Colonial. Saltbox. Townhouse. English. Craftsman.

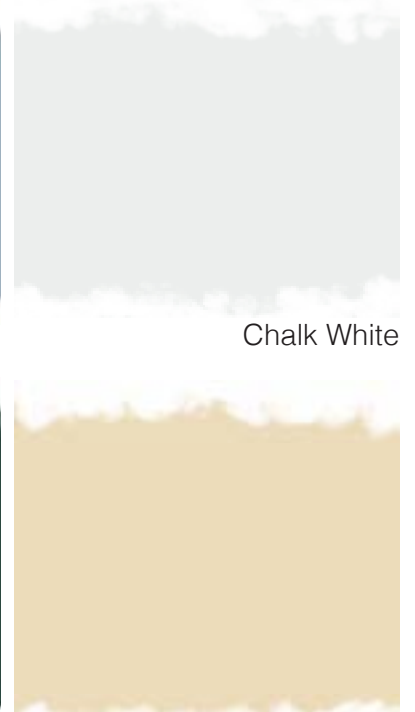


TRADITIONAL: COLONIAL LANDSCAPE DESIGN



Slate Blue

Hunter Green



Chalk White

Standish White

From the balcony of the Colonial estate, don't be surprised if you hear the call of Paul Revere in the night. It's also not uncommon for white-haired, pony-tailed men to arrive at your door by horse and buggy. The stately columns and stone walls may revolutionize your way of thinking.

DECOR



Sun Dial



Rustic Picket Fence



Arbors



Antique Mill Stone Fountain

MATERIALS



Stone walls



Stone Pavers



Slate



Pickets

PLANT PALETTE



Hydrangea



Papyrus



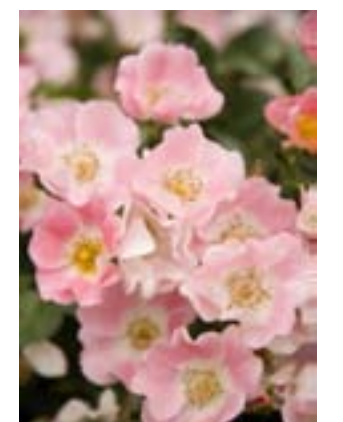
Echinacea



Phlox



Lilac

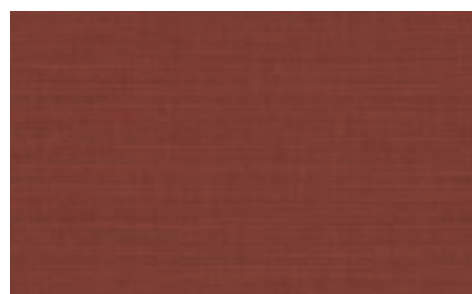


Roses

FABRICS



Mahogany/Brass Vintage



Dupione Henna

TRADITIONAL: SALTBOX LANDSCAPE DESIGN



Anthenian Blue



Blue-Gray



Harbor Gray



Chalk White

Remember your childhood, and the fluttering white curtains in the bedroom window on midsummer's evening. The chirping bird atop the windowbox was not only there for your enjoyment, but was welcoming Mary Poppins in on the breeze. The saltbox home is characteristic of charming memories and an occasionally prude but mesmerizing nanny.

DECOR



Windowbox



Traditional Bird Bath



Bird Houses

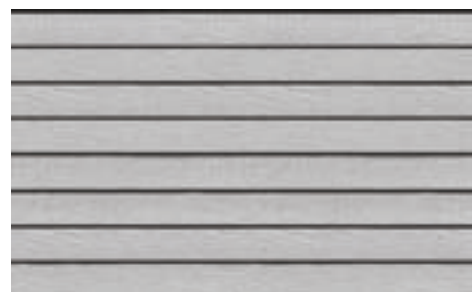


Pergola

MATERIALS



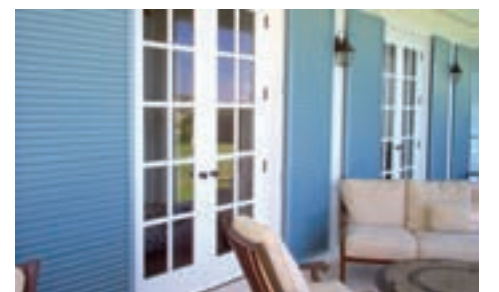
Brick



Clapboard



Pickets



Shutters

PLANT PALETTE



Flax Lily



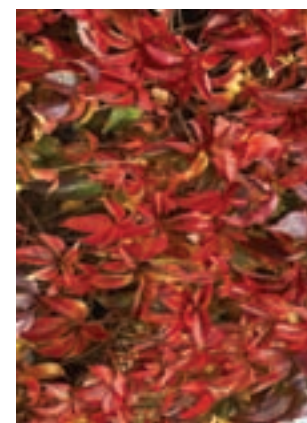
Rosa Rugosa



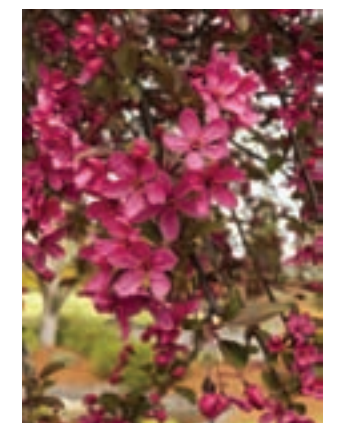
Ornamental Grasses



Red Twig Dogwood



Virginia Creeper

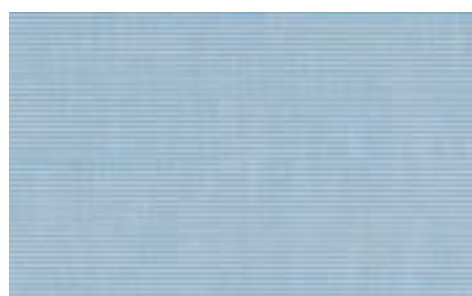


Flowering Crabapple

FABRICS



Navy/Taupe Fancy



Rib Sky Blue

TRADITIONAL: TOWNHOUSE LANDSCAPE DESIGN



Brick Red



Mocha Brown



Caramel Latte



Standish White

The "house in town" was the home of aristocrats during the social season of the year when they relocated from their country houses. The often wealthy Londoners enjoyed the terraced vistas of the townhouse. Now the vistas are yours to enjoy...at least while parliament is still in session.

DECOR



Wrought Iron Fence



Cast Iron Bench



Wood Planting Box



Cast Iron Urn

MATERIALS



Brick



Iron



Granite



Brownstone

PLANT PALETTE



Fountain Grass



Hebe



Ferns



Hosta



Dogwood



Yew

FABRICS

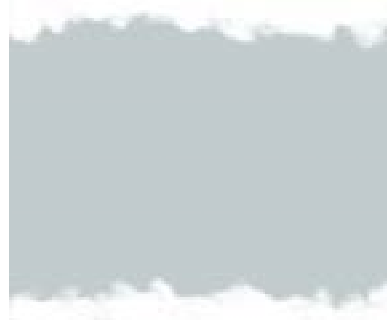


Eastland Redwood



Mahogany

TRADITIONAL: ENGLISH LANDSCAPE DESIGN



Gentle Gray



Minstrel Heart



Chatsworth Cream



Olive Moss

Heavy chimneys, half-timbering and dark wood paneling make every English style home seem like its gardens are automatically labeled "secret". There's always something intriguing, albeit epic to discover, such as wardrobes that open to wintry fantasy worlds.

DECOR



Wattle Edging & Panels



Bee Skep



English Garden Bench



English Pots

MATERIALS



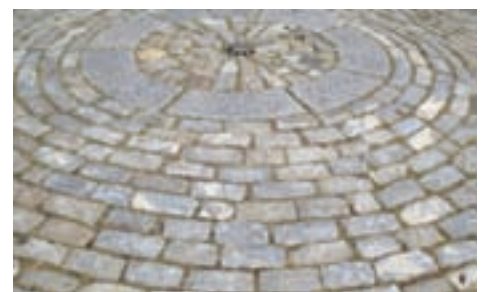
Brick



Thatch



Limestone



Cobblestone

PLANT PALETTE



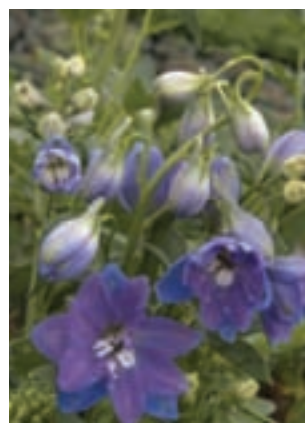
Reed Feather Grass



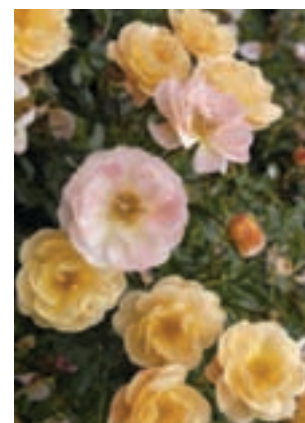
Coneflower



Daylily



Delphinium



English Roses

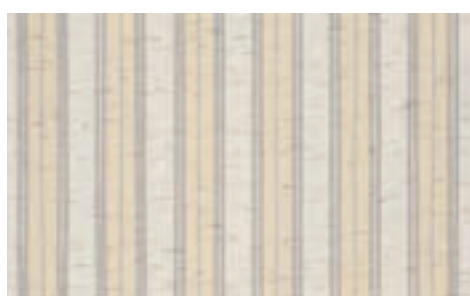


Sweet Pea

FABRICS



Cabaret Blue Haze



Grey/Beige Chip Fancy

TRADITIONAL: CRAFTSMAN LANDSCAPE DESIGN



Baked Terra Cotta



Bright Gold



Fresh Olive



Cool Mint

The Woodworkers Association concurs, it takes a craftsman to build a craftsman. While you're hand-hammering your copper sink, remember to stop and smell the Magnolia tree and reflect on a time when the hand-made was preferred over the mass-produced.

DECOR



Adirondack



Ceramic Pots



Hammered Copper Fire Pit



Wood Gate

MATERIALS



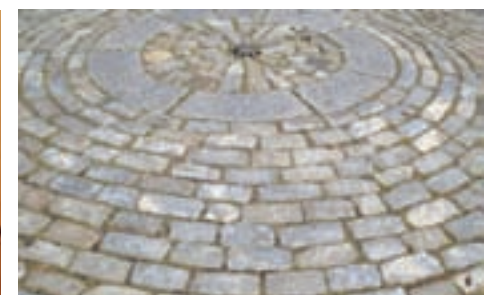
Wood Siding



Copper Gutters



Bronze Hardware



Cobblestone

PLANT PALETTE



Daylily



Acanthus



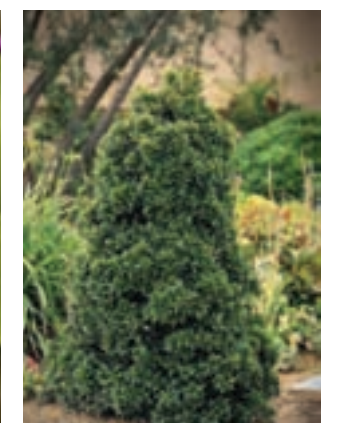
Nandina



Passionflower



Bergenia



Eugenia

FABRICS



Hendrix Clay



Weston Ginger

A Collection of

TROPICAL LANDSCAPE STYLES

South Pacific. Asian. Coastal.



TROPICAL: SOUTH PACIFIC LANDSCAPE DESIGN



Electric Orange



Dearborn Tan



Sweet Honeydew Melon



Cool Lava

It's 1958...love blooms between a young nurse and a secretive Frenchman. The island is iconic. The combination of bamboo, teak, thatch, tiki and wicker are an instant revival. While you're enjoying your umbrella drink, try not to break out into song.

DECOR



Tiki



Thatch Umbrella



Terracotta Urns

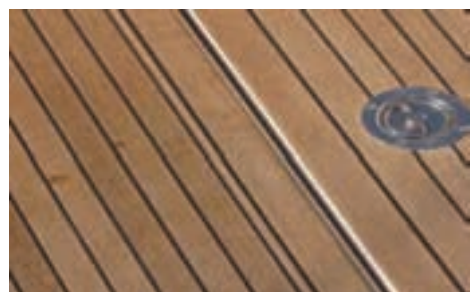


Asian Figures

MATERIALS



Thatch



Teak Planks



Bamboo

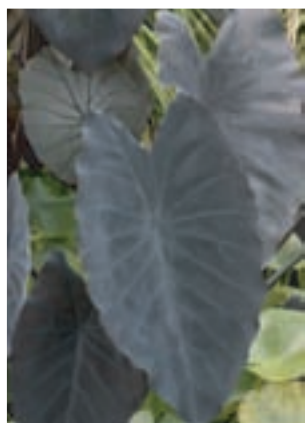


Teak Furniture

PLANT PALETTE



Bougainvillea



Colocasia



Orchid



Banana



Dracaena



Canna

FABRICS



Dolce Mango



Canvas Sunflower Yellow

TROPICAL: ASIAN LANDSCAPE DESIGN



Baby Fern



Champion Cobalt



Sundried Tomato



Stone Hearth

Harmonious. Inner peace. Silence. Understanding. Relationship. Environment. Spirit. Breathe. Think. If the Oriental style is known to conjure up good health and good vibes...why doesn't everyone do this?

DECOR



Pagoda Light



Bamboo Fencing



Bonsai



Bamboo Fountain

MATERIALS



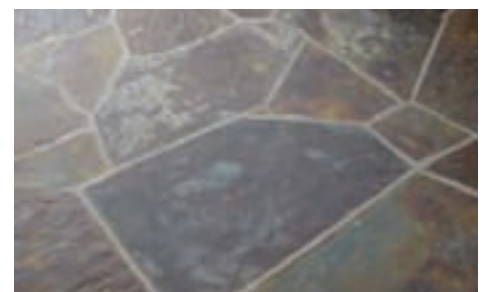
Pea Gravel



Decomposed Granite



Sand



Natural Stone

PLANT PALETTE



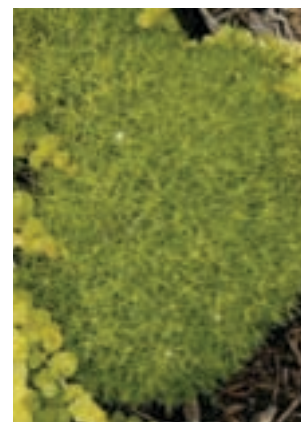
Japanese Maple



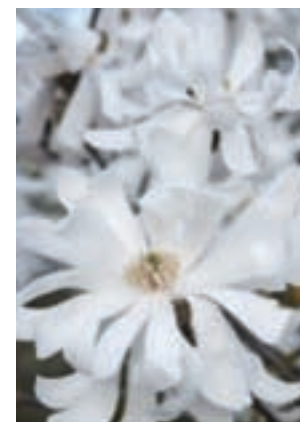
Weeping Atlas Cedar



Azalea



Moss



Star Magnolia



Flowering Cherry Tree

FABRICS



Kamal Chestnut



Dupione Palm

TROPICAL: COASTAL LANDSCAPE DESIGN



Painted Sands



At Sea



Steel Wool



Light Blue

If you live by the beach, you're one of the few and the proud to display teak and rattan. If you just like the look of sea shells and coral in your Nebraska home, then well, that's just awkward. Keep the marine artifacts and the hairdos that do well in the marine layer by the marina.

DECOR



Hammock



Seagrass Furniture

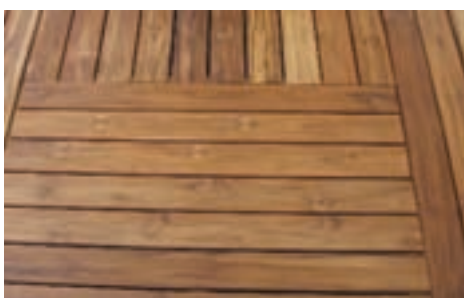


Marine Artifacts

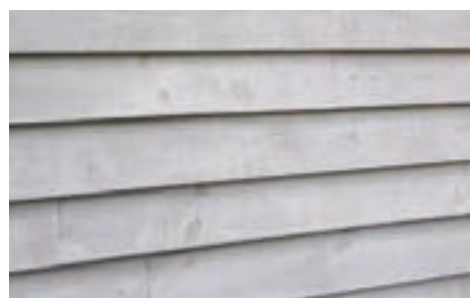


Shutters

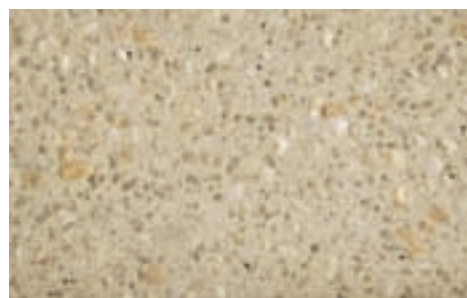
MATERIALS



Teak



Clapboard



Exposed Aggregate



Steel

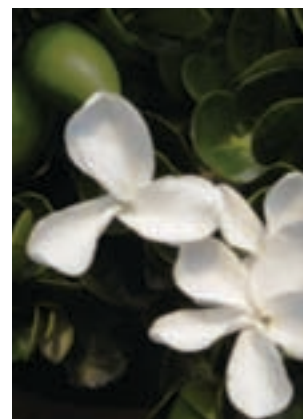
PLANT PALETTE



Mexican Feather Grass



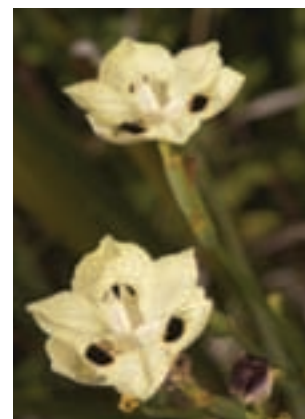
New Zealand Flax



Natal Plum



Verbena



Fortnight Lily



Palms

FABRICS



Caroline Sunbreeze



Dupione Seafoam

A Collection of

COUNTRY LANDSCAPE STYLES

Farmhouse. Victorian. Ranch. Rustic.



COUNTRY: FARMHOUSE LANDSCAPE DESIGN



Rust



Blanched Almond



Soft Sky



White Diamond

Warm and lovely days, lemonade, and picket fences are reminiscent of the country farmhouse. In the evenings, while you sip spirits on the lightly lit porch, you might hear the soft neigh of a horse. If you listen carefully, you just might hear John Walton call out, "Good night, John-Boy."

DECOR



Bent Willow Furniture



Wicker



Wishing Well



Birdhouse

MATERIALS



White Picket Fence



Post & Rail White Fence



Wood Tiles



Painted Wood

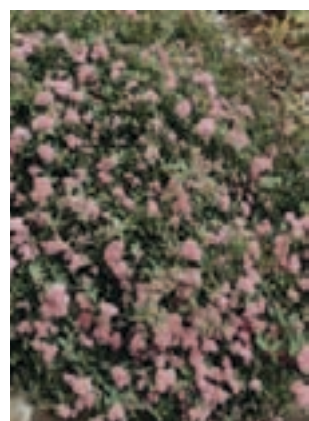
PLANT PALETTE



Hydrangea



Butterfly Bush



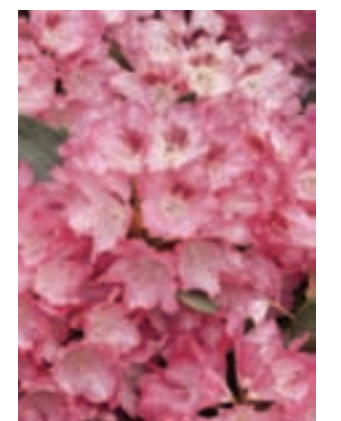
Spiraea



Shrub Roses



Wisteria

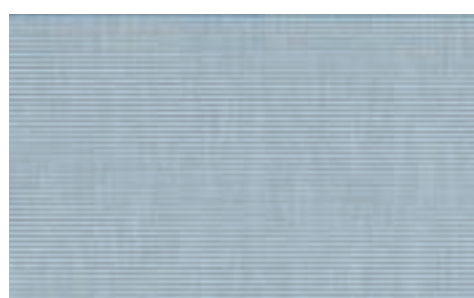


Azalea

FABRICS



Brannon Redwood



Rib Sky Blue

COUNTRY: VICTORIAN LANDSCAPE DESIGN



Peony

Blue Springs



Gardenia

Richmond Green

Elaborate ornamentation with a touch of whimsy describes the detailed bay windows, turrets, dormers, lattice, gazebos, and fancy wicker of the Victorian house. All are sure signs of a bygone era when horses and petticoats were more common than cars and telephones.

DECOR



Gazebo



Cast Iron Fountain



Wicker Furniture



Cast Iron Bench

MATERIALS



White Aged Wood



Carved Wood Columns



Lattice



Cast Iron

PLANT PALETTE



Azalea



Pittosporum



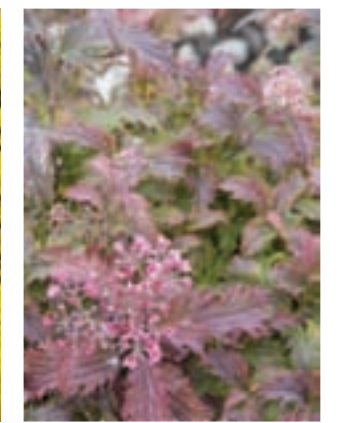
Wisteria



Hydrangea



Forsythia



Spiraea

FABRICS



Leigh Lemon



Marcello Seagrass

COUNTRY: RANCH LANDSCAPE DESIGN



Merlot Red



Cloud Nine



Guesthouse



Plymouth Brown

Nearly every sprawling, ranch-style home is one story. So who said those cowboys weren't thinkin' when they designed their homes on one level. It's hard to walk up stairs after a long day fixin' fences. Plus, why waste time when there's a perfectly good wagon wheel bench to sit on and a rusting tractor to look at.

DECOR



Wagon Wheel



Rustic Truck



Tree Swing



Pergola

MATERIALS



Stone Paving



Split Rail Fence



Flagstone Veneer



Rustic Hardware

PLANT PALETTE



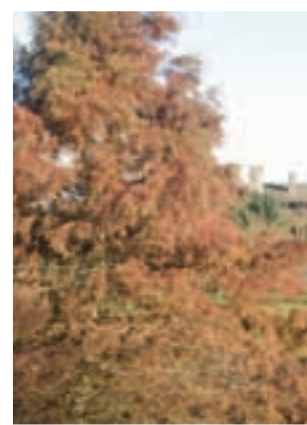
Salvia



Pine



Honeysuckle



Redwood



Aspen

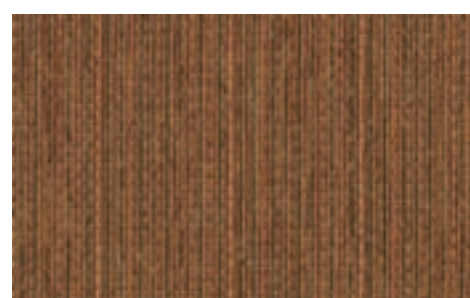


Oak

FABRICS



Harwood Crimson



Simone Flame

COUNTRY: RUSTIC LANDSCAPE DESIGN



Ferret Brown



Alligator Alley



Rustic Brick



Rusty Nail

If you have a rustic-style house, forego the fake deer in the front yard. You probably live in the boonies anyways where deer and sasquatch sightings are a regular occurrence. Or maybe you just like the lodgepole, flagstone, bent willow furniture look when you're sipping coffee by your lake.

DECOR



Fire Pit



Bent Willow Furniture



Rustic Shade Arbor

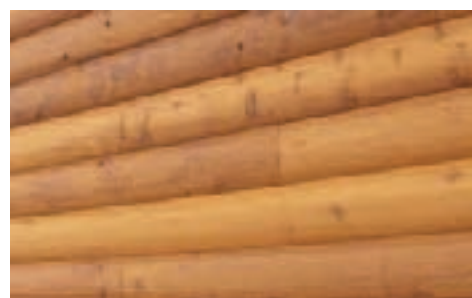


Twig Fence

MATERIALS



Redwood



Lodgepole Pine



Cedar

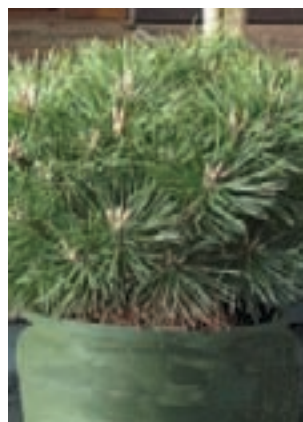


Local Flagstone

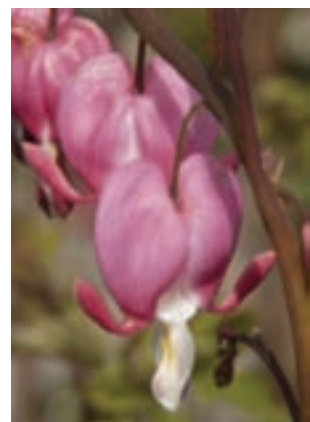
PLANT PALETTE



Deer Grass



Pine



Bleeding Heart



Native Hydrangea

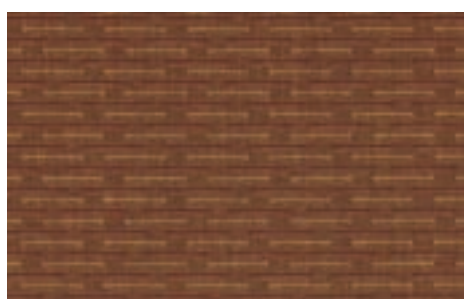


Maple



Fern

FABRICS



Dash Redwood



Resonance Mahogany

A Collection of

MODERN LANDSCAPE STYLES

Art Deco. Modern. Mid-Century.



MODERN: ART DECO LANDSCAPE DESIGN



Festive Orange



Snow Cone Green



Jet Black



Metallic Silver

Hollywood isn't the only place associated with elegance and glamour. Art deco homes are a lot like celebs...influenced by a lot of people and photographed often. Luckily when an art deco home needs to be remodeled, it might get a makeover but it doesn't have to go to rehab.

DECOR



Slate Fountain



Gabion Forms



Sphere



Circular Lighting

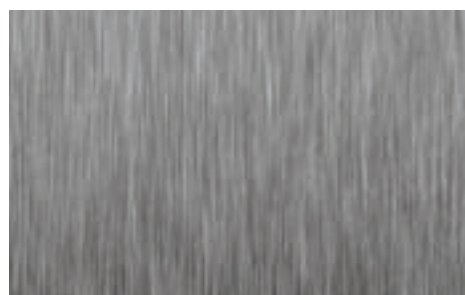
MATERIALS



Poured Concrete



Glass Blocks

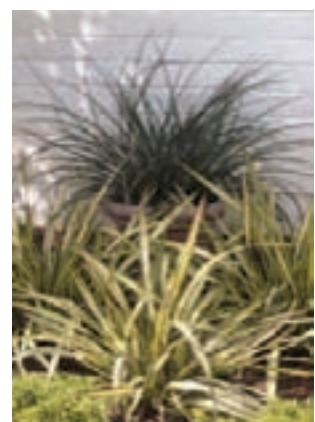


Stainless Steel



Stucco

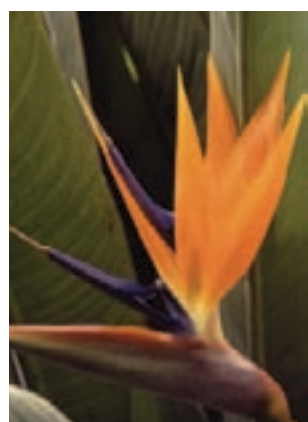
PLANT PALETTE



New Zealand Flax



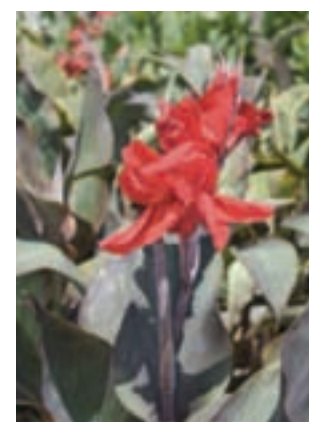
Orchid



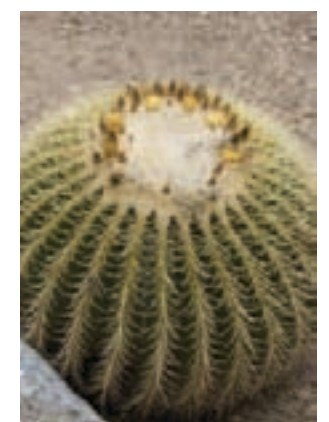
Bird of Paradise



Citrus



Canna

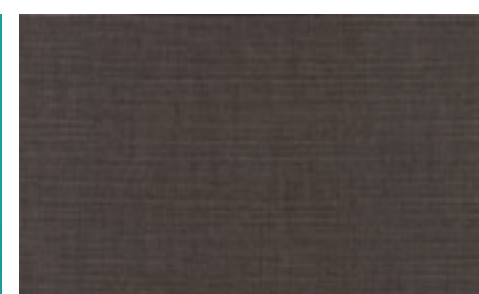


Cactus

FABRICS



Aruba



Canvas Coal

MODERN: MODERN LANDSCAPE DESIGN



Blue Macaw



Electric Orange



Metro Gray



Neon Lime

What does a square, a baby's butt, and a windsurfing board have in common? They're the makeup for a modern design. Okay, maybe it would be better described as geometrical, smooth, and streamlined, characterized by expansive, unadorned windows that marry the interior with the exterior. You get the picture.

DECOR



Art Furniture



Modern Sculpture



Fire Feature



Water Feature

MATERIALS



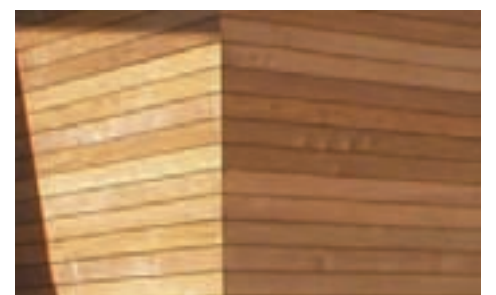
Wire Mesh



Cable Rail



Metal Mesh Panels



Wood Siding

PLANT PALETTE



Deer Grass



Yucca



Dracaena Palm



Succulents



Cactus

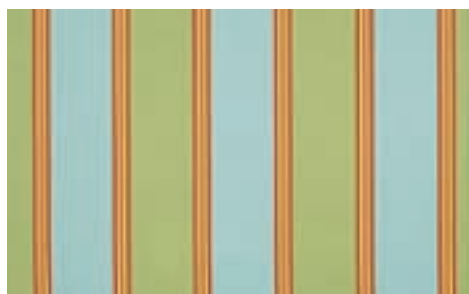


Sago Palm

FABRICS



Orange



Melbourne Parrot

MODERN: MID-CENTURY MODERN LANDSCAPE DESIGN



Black Iron



Mother Earth



Orange Burst



Vine Green

A mid-century modern home is George Jetson with a dash of Frank Lloyd Wright—a little bit retro mixed with space-age funky. Nonetheless this mid-20th century marvel is recognized by scholars and museums as a significant design movement. The only thing missing is a dog named "Astro."

DECOR



Portable Lamp



Vintage Furniture



Wood Bench



Contemporary Shade Structure

MATERIALS



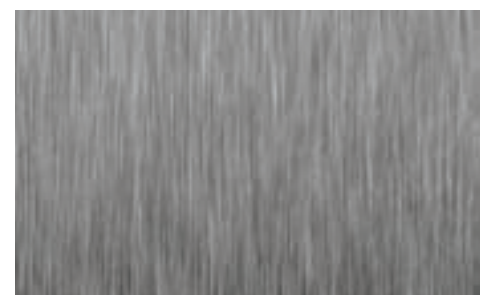
Natural Wood Glulam Beam



Poured Concrete



Stucco



Stainless Steel

PLANT PALETTE



Yucca



Agave



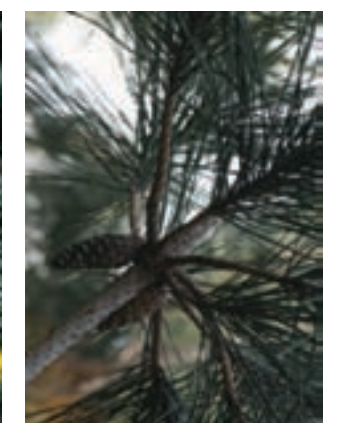
Cordyline



Horsetail



Gazania



Black Pine

FABRICS



Spectrum Kiwi



Scavo Autumn

Using **COLOR** to Set the Mood in the Landscape

PINK
Innocent, Soothing
Coordinating colors:
pink ladies
black iron

These pink cushions bring a playful, feel-good vibe under a somewhat overwhelming patio cover. The bright fabric and black furniture draw the eye into the soothing seating area.

RED
Excitement, Romantic
Coordinating colors:
red
grey timber wolf

The color of this wall makes a bold statement creating excitement and intrigue. At the same time, the privacy and seclusion it affords are perfect for a secluded, romantic space.

ORANGE
Energetic, Enthusiastic
Coordinating colors:
racing orange
azores

The entry way to this residence is bright and inviting. It's welcoming feel gives visitors a sudden sense of energy and excitement for what lies ahead.

YELLOW
Happy, Optimistic
Coordinating colors:
amarillo
ravishing red

A bright and positive entry such as this can't help but brighten your day. The long, narrow corridor to the courtyard gets visitors excited and optimistic that they won't be let down once they get to the end.

GREEN
Refreshing, Relaxing
Coordinating colors:
woodland green
adagio

Natural and rejuvenating, the color green freshens a space. It adds just the right amount of color for this relaxing, mid-century retreat.

BLUE
Calming, Serene
Coordinating colors:
franklin lakes
antique rose

The calm, at-peace feeling of a stroll through this garden is achieved by planting design. The blue agave and grasses create a serene environment suitable for reflection and relaxation.

PURPLE
Dramatic, Motivating
Coordinating colors:
mystical grape
veranda view

The dramatic impact of an entry filled with purple salvia adds a lot of curb appeal. Contrasting with the bright green tones of the landscape, the effect is inspiring.

BROWN
Elegant, Stability
Coordinating colors:
saddle brown
myan gold

The solid, earthy appeal of brown in a landscape helps bring connection to the garden. The size and warmth in the varying tones of brown, gold, and blue in this fountain add a simple elegance to the soothing sound of water.

BLACK
Authority, Sophisticated
Coordinating colors:
black iron
satchel

The black iron speaks volumes about what this patio is all about. It conjures up a powerful impression in a sophisticated yet fun entertaining area.

GRAY
Practical, Reliable
Coordinating colors:
smoke
burnt carmel

The practicality of simple gray tones need not stay muted. When accented by a warm color such as the carmel walls of this house, gray offers the reliable basis for nearly any design scheme.